

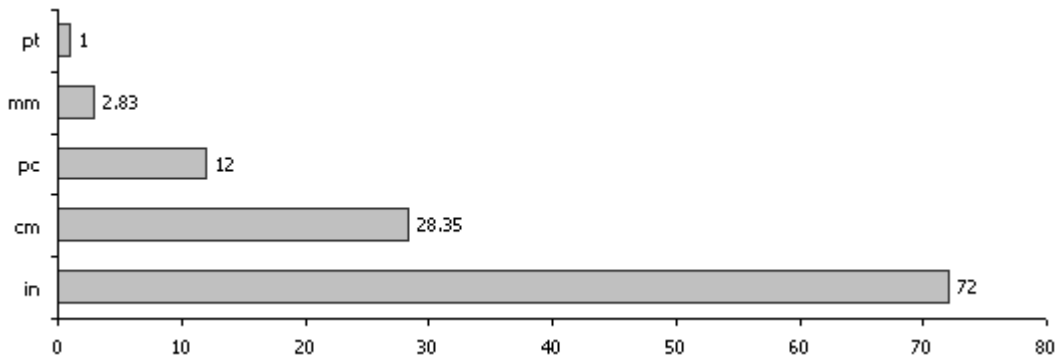
Selectors

Selector Types		
*	Any element	
E	The element E	
E1, E2, E3	The elements E1 and E2 and E3	
.myclass	The element with class "myclass"	
#myid	The element with ID "myid"	
E1 E2	E2 that is a child of E1	
E1 > E2	E2 that is a direct child of E1	
E1 + E2	E2 that follows E1 directly	
E1 ~ E2	E2 that follows E1	
E1:has(E2)	E1 that contains E2 (in jQuery only)	
:empty	The element that has no child element (including text nodes)	
E[attr]	E with attribute "attr"	
E[attr="val"]	E when its attribute "attr"="val"	
E[attr^="val"]	E when its attribute "attr" value starts with "val" or equals to "val"	p[lang="en"]
E[attr\$="val"]	E when its attribute "attr" value ends with "val"	a[href\$=mp3]
E[attr*="val"]	E when its attribute "attr" contains "val" in its value	
E[attr~="val"]	E when its attribute "attr" is a multi-valued attribute, contains the value "val". (Multi-valued attribute useually contains a whitespace separated list of values)	a[rel~="next"]
:lang(en)	The element E in language "en"	
:not(s)	The element that does not match the simple selector 's'	td:not([celspan])
ns E	The element E in the namespace "ns"	
Pseudo-Class - Status		
:link	The unvisited link	
:visited	The visited link	
:hover	The mouse-overd element	
:active	The activated element	
:disabled	The disabled UI element	
:enabled	The enabled UI element	
:required	The required UI element	
:optional	The optional UI element	
:valid	The UI element that has a valid value	
:invalid	The UI element that has an invalid value	
:focus	The focused UI element	
:checked	The checked UI element (e.g. radio-button or checkbox)	
Pseudo-Class - Order		
:first-child	The element that is the first child of its parent	
:last-child	The element that is the last child of its parent	
:only-child	The element that is the only child of its parent	
:nth-child(n)	The element that is the n th child of its parent	td:nth-child(2)

:nth-last-child(n)	The element that is the n th child of its parent starting from the last child
:nth-child(odd)	The element that has an odd-order as a child of its parent tr:nth-child(odd)
:nth-child(even)	The element that has an even-order as a child of its parent
:first-of-type	The element that is the first one of its type in the whole document
:last-of-type	The element that is the last one of its type in the whole document
:only-of-type	The element that is the only one of its type in the whole document
:nth-of-type(n)	The element that is the n th one of its type in the whole document
:nth-last-of-type(n)	The element that is the n th one of its type in the whole document starting from the last one
:root	The root element of the document
Pseudo-Element	
::first-letter	The first letter of the element's text
::first-line	The first line of the element's text
E::before	The generated content before the element E
E::after	The generated content after the element E
Media Selector	
@media <mediatype> { <css> }	Set the media properties
Page Selectors	
@page { <css> }	Set the page properties
@page :left { <css> }	@bottom-left-corner { ... /* left page numbers */ }
@page :right { <css> }	@bottom-right-corner { ... /* right page numbers */ }
@page :first { <css> }	@bottom-left-corner { ... /* empty footer on 1st page */ }

Units

Absolute Length Units	
cm	centimeter
mm	millimeter (1mm = 1/10 cm)
in	inch (1in = 2.54 cm)
pt	point (1pt = 1/72 in)
pc	pica (1pc = 12 pt)



Relative Length Units	
%	percentage
em	Width of "m" using the current font
ex	Height of lower-case "x" using the current font
rem	The font size of the root element
ch	width of the "0" glyph found in the font for the font size used to render
gd	The grid defined by 'layout-grid'
px	viewing-device's pixel
vh	viewport's height
vw	viewport's width
vm	viewport's height or width, whichever is smaller of the two

Angle Units	
deg	degree
grad	grad
rad	radian
turn	turns

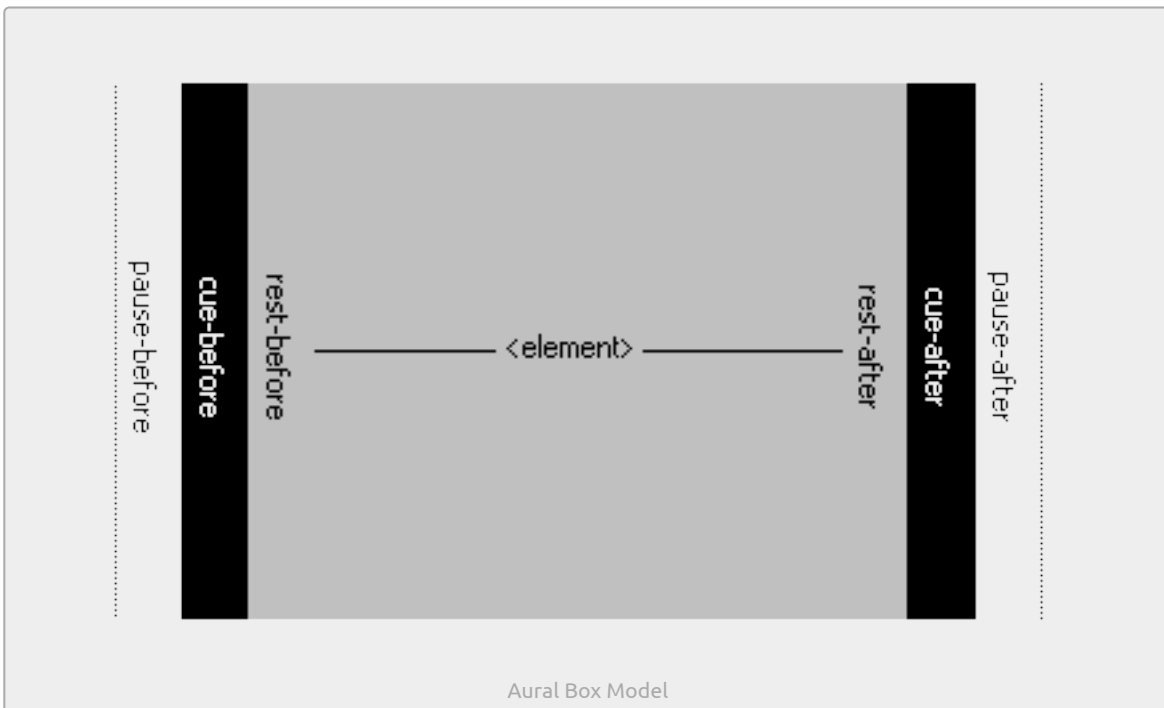
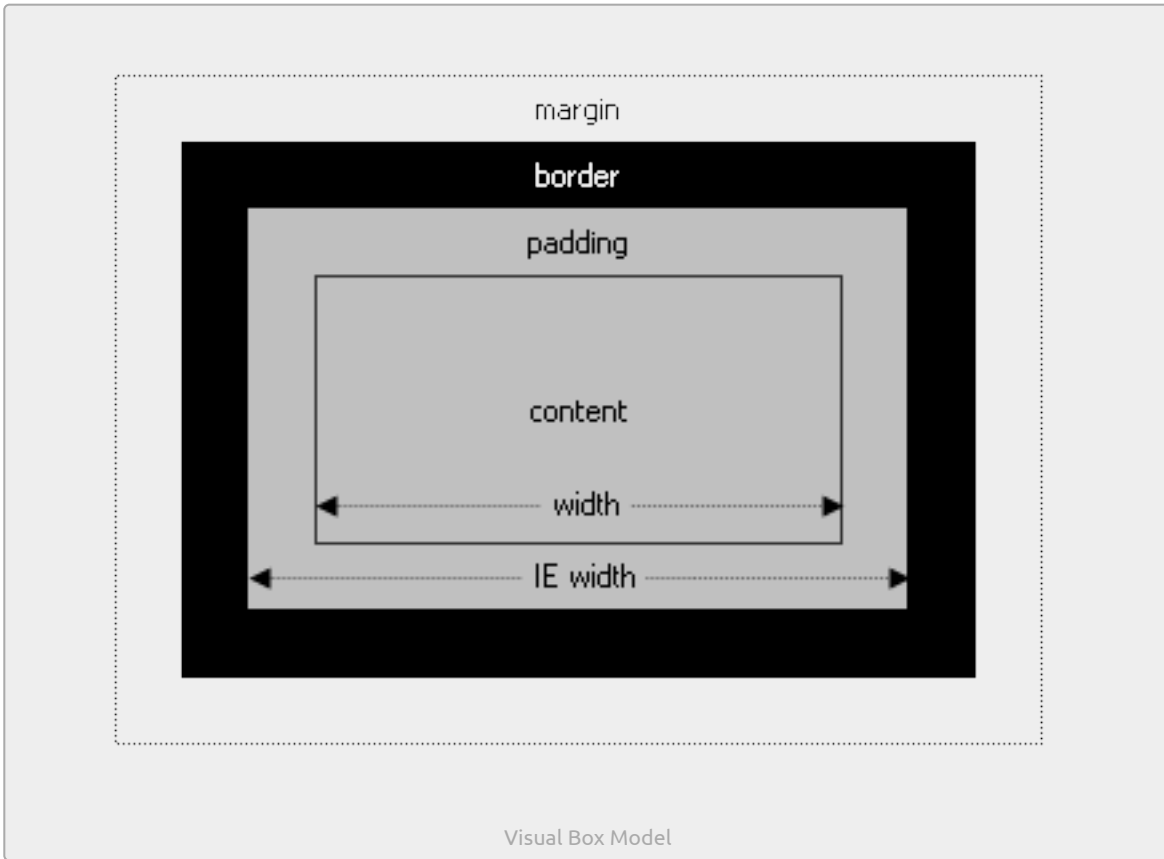
Time Units	
ms	milli-second
s	second

Frequency Units	
Hz	hertz
kHz	kilo-hertz

Color Units	
color name	red, yellow, transparent,...

System Colors	ThreeDFace ThreeDHighlight ThreeDShadow ThreeDLightShadow ThreeDDarkShadow ButtonFace ButtonText ButtonHighlight ButtonShadow Menu MenuText ActiveBorder InactiveBorder ActiveCaption InactiveCaption CaptionText InactiveCaptionText Highlight HighlightText InfoBackground InfoText Window WindowFrame WindowText AppWorkspace Background Scrollbar GrayText
#rrggbb	red = darkgreen = #f00
rgb(r,g,b)	red = rgb(255,0,0)
rgb(r%,g%,b%)	red = rgb(100%,0,0)
rgba(r,g,b,alpha)	red = rgba(255,0,0,1)
hsl(h,s,l)	red = hsl(0, 100%, 50%) (hue, saturation, lightness)
hsla(h,s,l,alpha)	red = hsl(0, 100%, 50%, 1) (hue, saturation, lightness, alpha)
currentColor	computed value of the 'currentColor' keyword is the computed value of the 'color' property
flavor	An accent color (typically chosen by the user) to customize the user interface of the user agent itself
Fonts	
System Fonts	caption icon menu message-box small-caption status-bar
Generic font families	serif sans-serif cursive fantasy monospace
Misc.	
<page-size>	A5 A4 A3 B5 B4 letter legal ledger
<content-list>	[pending(<identifier>) <string> contents footnote endnote section-note list-item <counters> <strings> open-quote close-quote no-open-quote no-close-quote <glyph> <url> <date> document-url <target>]+

Box Model



Attributes

Box Model	
display	block inline inline-block list-item none run-in compact table inline-table table-header-group table-footer-group table-row-group table-column-group table-caption table-cell table-row table-column ruby ruby-base ruby-text ruby-base-container ruby-text-container
visibility	visible hidden collapse
height	<length> <%> auto
width	<length> <%> auto
max-height	<length> <%> none
max-width	<length> <%> none
min-height	<length> <%> inherit
min-width	<length> <%> inherit
logical-height	<length> <%> auto
logical-width	<length> <%> auto
max-logical-height	<length> <%> none
max-logical-width	<length> <%> none
min-logical-height	<length> <%>
min-logical-width	<length> <%>
float	left right none <page-floats>
clear	left right both none
overflow	visible hidden scroll auto no-display no-content {1,2}
overflow-x	visible hidden scroll auto no-display no-content
overflow-y	visible hidden scroll auto no-display no-content
overflow-style	marquee-line marquee-block auto
marquee-direction	forward reverse
marquee-play-count	<+int> infinite
marquee-speed	slow normal fast
marquee-style	scroll slide alternate
rotation	<angle>
rotation-point	<bg-position>
Box Boundaries	
margin	<length> auto {1,4}
padding	<length> <%> {1,4}
border	<border-width> <border-style> <border-color>
border-width	<length> thin medium thick {1,4}
border-style	solid dotted dashed double groove ridge inset outset hidden none {1,4}
border-color	<color> {1,4}
border-image	<border-image-source> <border-image-slice> <border-image-width> <border-image-outset> <border-image-repeat>

border-image-source	<url> none	
border-image-slice	[<num> <%>] *4 fill	
border-image-width	[<length> <percentage> <number> auto]	{1,4}
border-image-outset	[<length> <number>]	{1,4}
border-image-repeat	[stretch repeat round]	{1,2}
outline	<outline-width> <outline-style> <outline-color>	
outline-width	<border-width> inherit	
outline-style	<border-style> auto inherit	
outline-color	<color> invert inherit	
outline-offset	<length> inherit	
border-radius	<length> %	{1,4}
box-shadow	[<length>, <length>, <length>, <length> <color> inset] none	
box-decoration-break	slice clone	
Background		
background	<background-image> <background-position> <background-size> <background-repeat> <background-attachment> <background-origin> <background-clip> <background-color>	
background-color	<color>	
background-image	<url> none	
background-position	top left top center top right center left center center center right bottom left bottom center bottom right x-<%> y-<%> x-pos y-pos	
background-repeat	repeat repeat-x repeat-y space round no-repeat	
background-clip	border-box padding-box content-box	
background-origin	border-box padding-box content-box	
background-size	[<length> <%>] [auto cover contain]	
background-break	bounding-box each-box continuous	
background-attachment	scroll fixed local	
Positioning		
position	relative absolute fixed static	
top	<length> <%> auto	
right	<length> <%> auto	
bottom	<length> <%> auto	
left	<length> <%> auto	
z-index	<num>	
clip	<shape> auto	
grid-columns	none inherit [<length> percentage relative <length>]	
grid-rows	none inherit [<length> percentage relative <length>]	

Text	
text-align	start end left right center justify <string>
text-align-last	start end left right center justify
text-justify	inter-word inter-ideograph inter-cluster distribute kashida tibetan auto
hanging-punctuation	[start end end-edge] none
punctuation-trim	[start end adjacent] none
text-indent	[<length> <%>] hanging?
text-emphasis	[[accent dot circle disc] [before after]?] none
text-transform	capitalize uppercase lowercase none
word-break	keep-all loose break-strict break-all normal
text-wrap	unrestricted none suppress normal
word-wrap	break-word normal
letter-spacing	<length> <%> normal {1,3}
word-spacing	<length> <%> normal {1,3}
white-space	pre nowrap pre-wrap pre-line normal
white-space-collapse	preserve collapse pre-serve-breaks discard
text-decoration	none underline overline line-through blink
color	<color> inherit
opacity	<alpha> inherit
text-outline	[<length> <length>? <color>] none
text-shadow	[<length> <length> <length>? <color>?] none
ruby-align	start end left center right distribute-letter distribute-space line-edge auto
ruby-overhang	start end auto none
ruby-position	before after right inline
ruby-span	attr(x) none
Text Direction	
direction	ltr rtl
unicode-bidi	normal [embed isolate] [plaintext bidi-override]
writing-mode	horizontal-tb vertical-rl vertical-lr horizontal-bt
directional-mode	physical logical
Hyperlink	
target	<target-name> <target-new> <target-position>
target-name	current root parent new modal <string>
target-new	window tab none
target-position	above behind front back
Font	
font	[<font-style> <font-variant> <font-weight> <font-size> <font-family>] <system-fonts>
font-family	[<font-name>, <generic-font-families>] inherit
font-size	<length> <%> smaller larger inherit xx-small x-small small medium large x-large xx-large
font-size-adjust	<num> none inherit

font-weight	normal bold bolder lighter inherit 100 200 300 400 500 600 700 800 900
font-stretch	wider narrower normal inherit semi-condensed condensed extra-condensed ultra-condensed semi-expanded expanded extra-expanded ultra-expanded
font-style	normal italic oblique inherit
font-variant	normal small-caps inherit
Font - @font-face Rule	
font-family	<font-name>
font-weight	normal bold bolder lighter inherit 100 200 300 400 500 600 700 800 900
font-stretch	wider narrower normal inherit semi-condensed condensed extra-condensed ultra-condensed semi-expanded expanded extra-expanded ultra-expanded
font-style	normal italic oblique inherit
src	<url>, <local> , *
unicode-range	<urange> , *
Line Box	
vertical-align	baseline sub super top text-top middle central bottom text-bottom use-script auto <length> <%>
line-height	<num> <length> <%> normal none
text-height	font-size text-size max-size auto
baseline-shift	baseline sub super <length> <%>
inline-box-align	initial last <int>
alignment-adjust	central middle ideographic alphabetic mathematical text-before-edge text-after-edge hanging baseline before-edge after-edge auto <length> <%>
alignment-baseline	central middle ideographic alphabetic mathematical text-before-edge text-after-edge hanging baseline before-edge after-edge use-script
dominant-baseline	central middle ideographic alphabetic mathematical text-before-edge text-after-edge hanging no-change reset-size use-script auto
drop-initial-before-align	central middle ideographic alphabetic mathematical text-before-edge text-after-edge hanging baseline before-edge after-edge use-script caps-height
drop-initial-after-align	central middle ideographic alphabetic mathematical text-before-edge text-after-edge hanging baseline before-edge after-edge use-script
drop-initial-before-adjust	central middle ideographic alphabetic mathematical before-edge text-before-edge <length> <%>
drop-initial-after-adjust	central middle ideographic alphabetic mathematical after-edge text-after-edge <length> <%>
drop-initial-value	initial <int>
drop-initial-size	auto <line> <length> <%>
line-stacking	<line-stacking-strategy> <line-stacking-ruby> <line-stacking-shift>
line-stacking-strategy	inline-line-height block-line-height max-height grid-height
line-stacking-ruby	exclude-ruby include-ruby
line-stacking-shift	consider-shifts disregard-shifts
Table	
caption-side	top bottom left right
table-layout	fixed auto

border-collapse	collapse separate
border-spacing	<length> <length>
empty-cells	show hide
List	
list-style	<list-style-type> <list-style-position> <list-style-image>
list-style-type	<p>box check circle diamond disc hyphen square </p> <p>japanese-formal japanese-informal simp-chinese-formal simp-chinese-informal trad-chinese-formal trad-chinese-informal lower-roman upper-roman lower-armenian upper-armenian armenian cjk-ideographic ethiopic-numeric georgian hebrew syriac tamil </p> <p>decimal decimal-leading-zero upper-hexadecimal lower-hexadecimal octal binary arabic-indic bengali cambodian devanagari gujarati gurmukhi kannada khmer lao malayalam mongolian myanmar oriya persian telugu tibetan thai urdu </p> <p>amharic amharic-abegede cjk-earthly-branch cjk-heavenly-stem ethiopic ethiopic-abegede ethiopic-abegede-am-et ethiopic-abegede-gez ethiopic-abegede-ti-er ethiopic-abegede-ti-et ethiopic-halehame-aa-er ethiopic-halehame-aa-et ethiopic-halehame-am-et ethiopic-halehame-gez ethiopic-halehame-om-et ethiopic-halehame-sid-et ethiopic-halehame-so-et ethiopic-halehame-ti-er ethiopic-halehame-ti-et ethiopic-halehame-tig hangul hangul-consonant hiragana hiragana-iroha katakana katakana-iroha lower-alpha upper-alpha lower-greek upper-greek lower-norwegian upper-norwegian lower-latin upper-latin tigrinya-er tigrinya-er-abegede tigrinya-et tigrinya-et-abegede afar oromo sidama somali tigre </p> <p>asterisks footnotes</p>
list-style-position	inside outside
list-style-image	<url> none
Multi-Column	
columns	<column-width> <column-count>
column-width	<length> auto
column-count	<num> auto
column-rule	<column-rule-width> <column-rule-style> <column-rule-color>
column-rule-width	<border-width>
column-rule-style	<border-style>
column-rule-color	<color>
column-fill	balance auto
column-gap	<length> normal
column-span	1 all
break-before	auto always left right page column avoid avoid-page avoid-column
break-after	auto always left right page column avoid avoid-page avoid-column
break-inside	auto avoid avoid-page avoid-column
Flexible Box Layout	
box-align	start end center baseline stretch

box-direction	normal reverse inherit
box-flex	<num>
box-flex-group	<int>
box-lines	single multiple
box-ordinal-group	<int>
box-orient	horizontal vertical inline-axis block-axis inherit
box-pack	start end center justify
Generated Content	
content	[<url> ' ']* [<content-list> normal none inhibit]
counter-increment	[<identifier> <int>?]+ none
counter-reset	[<identifier> <int>?]+ none
crop	<shape> auto
display	normal list-item none
move-to	<identifier> normal here
page-policy	start first last
quotes	[<string> <string>]+ none
Generated Content for Paged Media	
bookmark-label	content() attr() <string>
bookmark-level	<int> none
bookmark-state	open closed
bookmark-target	<url> <attr> none
hyphenate-after	<int> auto
hyphenate-before	<int> auto
hyphenate-character	<string> auto
hyphenate-lines	<int> no-limit
hyphenate-resource	none <url>
hyphens	manual auto none
bleed	<length>
float-offset	<length> <length> ?
image-resolution	[from-image <dpi>] normal
marks	[crop cross] none
string-set	[[<identifier> <content-list>] [<identifier> <content-list>]*] none
Paged Media	
page-break-after	avoid always left right auto
page-break-before	avoid always left right auto
page-break-inside	avoid auto
orphans	<int>
widows	<int>

image-orientation	<angle> auto
fit	fill hidden meet slice
fit-position	[[<%> <length>]{1,2} [[top center bottom] [left center right]]] auto
Paged Media - @page Rule	
size	<length>{1,2} auto [<page-size> [portrait landscape]]
page	<identifier> auto
	It also accept the essential box properties: margin, border, padding, and background
Presentation Levels	
presentation-level	<int> same increment
UI	
appearance	icon window desktop work-space document dialog tab outline-tree hyperlink tooltip button push-button radio-button checkbox radio-group checkbox-group menu menubar menu-item pull-down-menu pop-up-menu list-menu field combo-box range signature password normal inherit
cursor	pointer move text wait help crosshair e-resize w-resize n-resize s-resize ne-resize nw-resize se-resize sw-resize auto default <url>
icon	<url> auto inherit
nav-index	<num> auto inherit
nav-up	auto <id> [current root <target-name>]? inherit
nav-right	auto <id> [current root <target-name>]? inherit
nav-down	auto <id> [current root <target-name>]? inherit
nav-left	auto <id> [current root <target-name>]? inherit
box-sizing	content-box border-box inherit
resize	both horizontal vertical none inherit
Speech	
pause	<pause-before> <pause-after>
pause-before	<time> x-weak weak medium strong x-strong none inherit
pause-after	<time> x-weak weak medium strong x-strong none inherit
cue	<cue-before> <cue-after>
cue-before	<url> [silent x-soft soft medium loud x-loud] none inherit
cue-after	<url> [silent x-soft soft medium loud x-loud] none inherit
rest	<rest-before> <rest-after>
rest-before	<time> x-weak weak medium strong x-strong none inherit
rest-after	<time> x-weak weak medium strong x-strong none inherit
mark	<mark-before> <mark-after>
mark-before	<string>
mark-after	<string>
voice-family	[[<specific-voice> [<age>] <generic-voice>] [<number>],]* [<specific-voice> [<age>] <generic-voice>] [<number>] inherit

voice-volume	<num> <%> silent x-soft soft medium loud x-loud inherit
voice-balance	<num> left center right leftwards rightwards inherit
voice-duration	<time>
voice-rate	<%> x-slow slow fast x-fast inherit
voice-pitch	x-low low medium high x-high inherit <num> <%>
voice-pitch-range	x-low low medium high x-high inherit <num>
voice-stress	strong moderate none reduced inherit
phonemes	<string>
spell	spell-out digits literal-punctuation no-punctuation normal none inherit
Animations	
animation	<animation-name> <animation-duration> <animation-timing-function> <animation-delay> <animation-iteration-count>
animation-name	IDENT none
animation-delay	<time>
animation-duration	<time>
animation-direction	alternate normal
animation-iteration-count	<num> inherit
animation-play-state	running paused
animation-timing-function	ease linear ease-in ease-out ease-in-out cubic-Bezier(<num>,<num>,<num>,<num>)
Transitions	
transition	<transition-property> <transition-duration> <transition-timing-function> <transition-delay>
transition-duration	<time>
transition-delay	<time>
transition-timing-function	ease linear ease-in ease-out ease-in-out cubic-Bezier(<num>,<num>,<num>,<num>)
transition-property	all [<IDENT>] none
3D/2D Transformation	
transform	matrix(<num>,<num>,<num>,<num>,<num>,<num>) matrix3d(<num>,<num>,<num>,<num>,<num>,<num>,<num>,<num>,<num>,<num>,<num>,<num>,<num>,<num>,<num>,<num>) translate(<length>[,<length>]) translate3d(<length>,<length>,<length>) translateX(<length>) translateY(<length>) translateZ(<length>) scale(<num>[,<num>]) scale3d(<num>,<num>,<num>) scaleX(<num>) scaleY(<num>) scaleZ(<num>) rotate(<angle>) rotate3d(<num>,<num>,<num>,<angle>) rotateX(<angle>) rotateY(<angle>) rotateZ(<angle>)

	skewX(<angle>) skewY(<angle>) skew(<angle> [, <angle>])
transform-origin	[[[<%> <length> left center right] [<%> <length> top center bottom]] <length>]
transform-style	flat preserve-3d
perspective	<num> none
perspective-origin	[[[<%> <length> left center right] [<%> <length> top center bottom]] <length>]
backface-visibility	visible hidden

Box Bounderies Attributes

border	border-width	border-style	border-color
border-top	border-top-width	border-top-style	border-top-color
border-right	border-right-width	border-right-style	border-right-color
border-bottom	border-bottom-width	border-bottom-style	border-bottom-color
border-left	border-left-width	border-left-style	border-left-color
border-before	border-before-width	border-before-style	border-before-color
border-after	border-after-width	border-after-style	border-after-color
border-start	border-start-width	border-start-style	border-start-color
border-end	border-end-width	border-end-style	border-end-color

outline	outline-width	outline-style	outline-color
----------------	----------------------	----------------------	----------------------

margin			
margin-top			
margin-right			
margin-bottom			
margin-left			
margin-before			
margin-after			
margin-start			
margin-end			

padding			
padding-top			
padding-right			
padding-bottom			
padding-left			
padding-before			
padding-after			
padding-start			
padding-end			

Media Types

Media Types	Media Groups									
	continuous	paged	visual	audio	speech	tactile	grid	bitmap	static	interactive
screen	continuous		visual	audio				bitmap	static	interactive
print		paged	visual					bitmap	static	
projection		paged	visual					bitmap		interactive
tv	continuous	paged	visual	audio				bitmap	static	interactive
handheld	continuous	paged	visual	audio	speech		grid	bitmap	static	interactive
speech	continuous				speech				static	interactive
tty	continuous		visual				grid		static	interactive
braille	continuous					tactile	grid		static	interactive
emboss		paged				tactile	grid		static	

Syntax Guideline

Syntax	Meaning
	or
	and/or
[]	grouping
<>	variable
<num>	number: normal number, doesn't accept fractions. e.g. 1, 2, 3, ...
<int>	integer: number accepts fractions. e.g. 1, 2.5, 3.75
<%>	percentage: integer followed by '%'
<length>	integer followed by a length unit
<angle>	integer followed by an angle unit
{x,y}	The preceding value/group occurs at least x times and at most y times.
*	The preceding value/group occurs zero or more times. {0,*}
+	The preceding value/group occurs one or more times. {1,*}
?	The preceding value/group is optional. {0,1}
Bold	New attribute, i.e. supported in CSS 3 only